

Institute of the Brothers of the Christian Schools
New Institute Appointments

As of 2023 June 4

Institute Commissions:

Commission on Association	Chair, Ms. Heather Ruple
Commission on Consecrated Life	Chair, Br. Steven Vasoli FSC
Commission on Education	Chair, Br. Edmundo Fernandez FSC
Commission on Evangelization	Chair, Mr. Charles Legendre
Commission on Formation	Chair, Br. Eder Polido FSC
Commission on Justice & Peace	Chair, Mr. Jerald Joseph
Commission on Youth	Chair, Ms. Julia Mayer

Institute Offices:

Office of Data Management & Research.....	Director, Br. [REDACTED]	FSC
Office of ICJM Consortium.....	Director, Mr. Ronald Holmes	
Office of Information & Communication	Director, Mr. Oscar Elizalde	
Office of Professional Development	Director, Br. Francisco de la Rosa VI	
Office of Safeguarding & Integrity	Director, Br. Aidan Kilty FSC	
Office of Solidarity & Development	Director, Br. Dante Amisola FSC	
Office of Vocations & Volunteer Ministry ...	Director, Mr. Mourad Barsoum	

Institute of the Brothers of the Christian Schools New Governance Structure

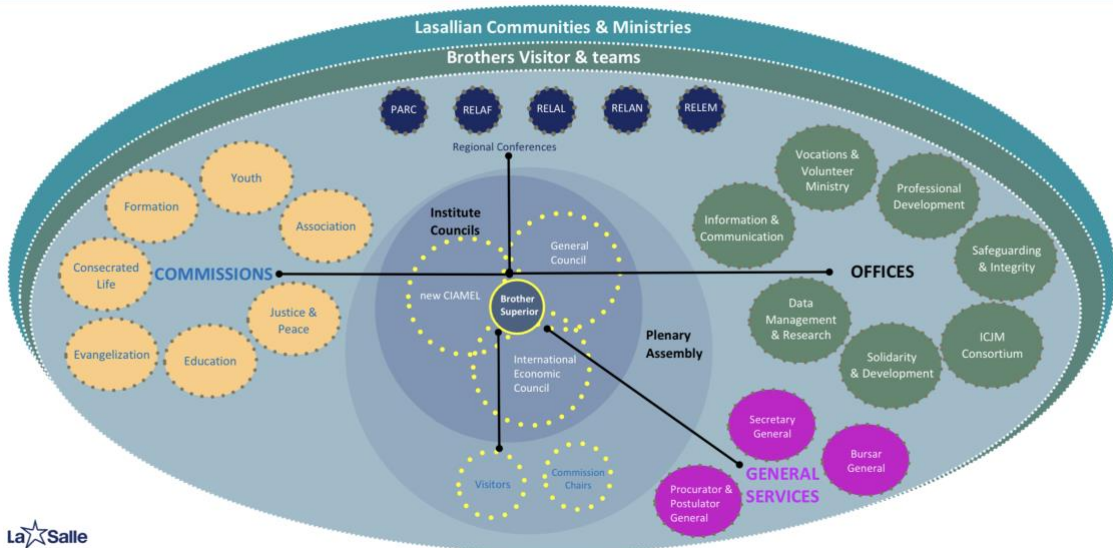
As of 2023 June 4

[1]



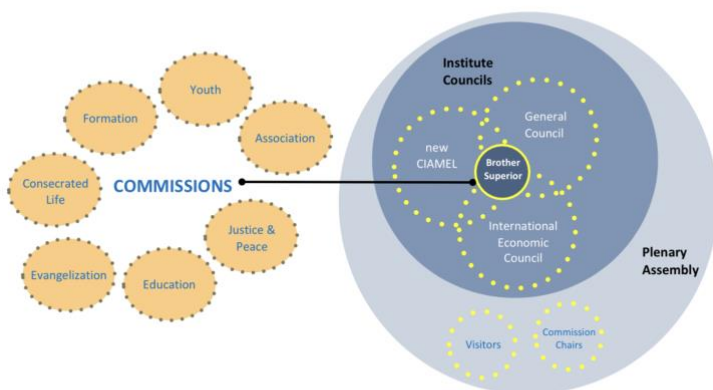
[2]

Leadership, Animation & Governance Structure



[3]

Leadership, Animation & Governance Structure



Institute Commissions:

- ☑ share leadership and animation functions of the Councils
- ☑ identify emerging critical issues impacting the Lasallian Family
- ☑ provide input to ensure that the commitments of 46GC & III AIMEL are fulfilled
- ☑ propose policies and programs to promote greater collaboration of all Lasallians globally

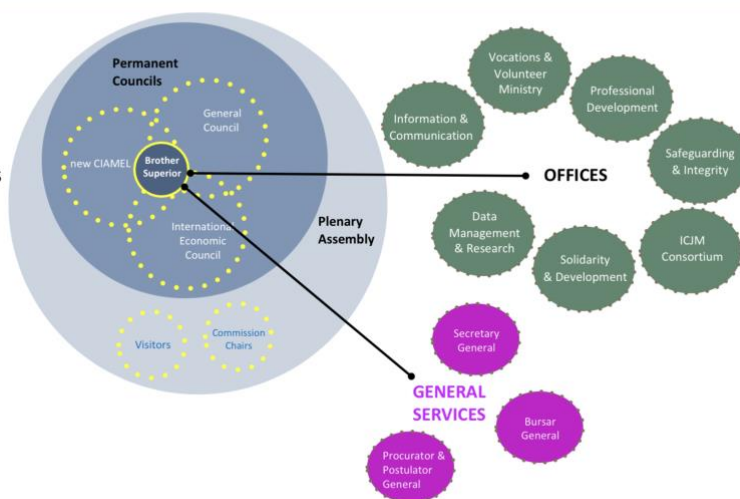


[4]

Leadership, Animation & Governance Structure

Institute Offices:

- ☑ execute, and manage specific services as envisioned by the Institute Councils
- ☑ support the Regions and Districts in implementing the directives from the Plenary Assembly
- ☑ identify and initiate improvement opportunities for its administrative and support services

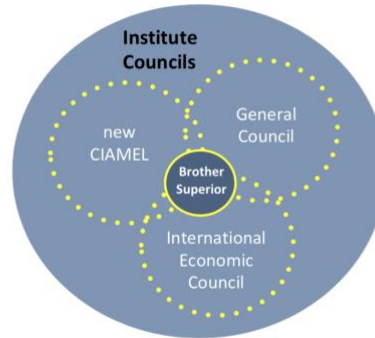


[5]

Leadership, Animation & Governance Structure

Institute Councils:

- ☑ policy-making bodies for the global Lasallian family
- ☑ advisory bodies to the Brother Superior on high-level issues
- ☑ supervisory bodies in monitoring the mandate of 46GC & III AIMEL



[6]

Leadership, Animation & Governance Structure

Plenary Assembly:

- ☑ reviews organizational health in light of the directions set by 46GC & III AIMEL
- ☑ communally discerns emerging concerns impacting the Church and the Lasallian Educational Mission
- ☑ shares best practices and processes across geographical and cultural borders to leverage on the international character of the Institute

